

卷板剪切线系列

COIL LINE PROCESSING

横切线

纵切线

复合线

落料线

摆剪线

▼ China Top Brand

Yawei 亚威

股票代码 002559



江苏亚威机床股份有限公司，是原机械部定点从事锻压机械制造的国家二级企业。历经50多年的发展，公司现已成为国家火炬计划重点高新技术企业、江苏省高新技术企业，国内领先的中高端金属板材成形机床成套设备研发及制造商，中国锻压行业首家上市公司，被誉为“锻压行业第一股”。

公司产品定位中高端，产品数控化率达95%以上。国内市场占有率名列前茅，国际市场知名度日益扩大，产品远销欧美、亚非等40多个国家和地区。

公司秉承“满意客户、成就员工、回报股东、创福社会”的企业使命，坚守“诚、精、和、新”的企业精神，以超前的意识、全新的理念，一流的制造能力，融合国内外先进技术，致力于开发创造行业尖端产品，立志成为“世界一流的机械装备与解决方案供应商”。

After development of more than 50 years, Jiangsu Yawei Machine-Tool Co., Ltd., a national secondary enterprise designated by former Ministry of Machinery to manufacture metal forming machinery, has now become the key high-tech enterprise of National Torch Plan, high-tech enterprises in Jiangsu Province, the leading manufacturer of developing and manufacturing middle and high end sheet metal forming machine and equipment in China. Moreover, Yawei is the first public listed company in forging industry in China.

The products of Yawei is positioning in middle and high end; CNC rate reaches 95%, which is among the best in the industry. With advanced awareness, new ideas, superior manufacturing capabilities and integration of advanced technology from foreign countries.

Yawei has always been committed itself to developing and manufacturing the top products in industry, continuing to provide industry-leading machine and services to our clients in all the world.



我们的能力 OUR CAPACITY



技术能力 TECHNICAL ABILITY

亚威设有开发中心，拥有国内外设计人员50多人，专业从事卷板剪切线的开发设计。

Yawei development centre having more than 50 foreign and domestic designing engineers, professionally engaged in R&D of coil metal cutting line.

加工能力 MANUFACTURING ABILITY

亚威具有50年以上的机械制造经验，有数控落地镗铣床、数控加工中心等加工设备300多台。

Yawei has been manufacturing machinery more than 50years, having more than 300sets of main manufacturing and production equipment, such as CNC boring and milling machines, CNC processing center, etc.

质量保证 QUALITY GUARANTEE

ISO9001:2000 国际质量体系认证

ISO9001:2000 International Quality System Certificate



YAWEI PRODUCTION

用于卷材加工的成套设备和专用设备

INDUSTRIAL PLANTS AND SPECIAL EQUIPMENT FOR THE PROCESSING OF FLAT-ROLLED METALS
WOUND IN COILS

- ▶ **横切线** CUT TO LENGTH LINE
- ▶ **纵切线** SLITTING LINE
- ▶ **复合线** COMBINED LINE
- ▶ **落料线** SHEET METALS BLANKING LINE
- ▶ **摆剪线** CUT TO LENGTH LINE WITH OSCILLATING SHEAR

亚威公司奉行如下客户服务准则：

- ▶ 充分了解客户需求
- ▶ 与客户深入交流和技术分析，选择最佳方案
- ▶ 全过程和客户密切合作
- ▶ 为客户提供员工培训
- ▶ 服务过程保证及时，有效
- ▶ 设备投产后我们还将定期访问用户，不断更新设备的工作效率

YAWEI keep relations with customers according to specific guidelines:

- ▶ Adequately understand customer's requirements
- ▶ Make deep communication and technical analysis with customer, to choose best project
- ▶ Concrete cooperation throughout the job
- ▶ Make training to customer's personnel
- ▶ Immediate and effective assistance
- ▶ Periodical visits after the acceptance of the jobs, to maintain effectiveness at the renewal level

小型横切线

CUT TO LENGTH LINE



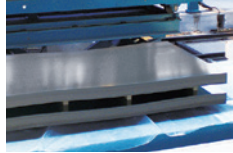
型号 Model	650型	800型	800型
原始卷料 Processing material	冷轧板、镀锌板、彩涂板、不锈钢板等 Cold-rolled steel coil, Galvanized coil, Color-coated coil, Stainless steel coil, etc.		
材料厚度 Processing sheet thickness	0.2mm-2.3mm	0.2mm-2.3mm	0.5mm-3.0mm
材料宽度 Processing sheet width	650mm (MAX)	800mm (MAX)	800mm (MAX)
卷料重量 Coil weight permitted	8ton (MAX)	10ton (MAX)	10ton (MAX)
剪切精度 Cutting accuracy	±0.3mm	±0.3mm	±0.3mm
机组速度 Line speed	80m/min (MAX)	80m/min (MAX)	80m/min (MAX)

横切线

CUT TO LENGTH LINE

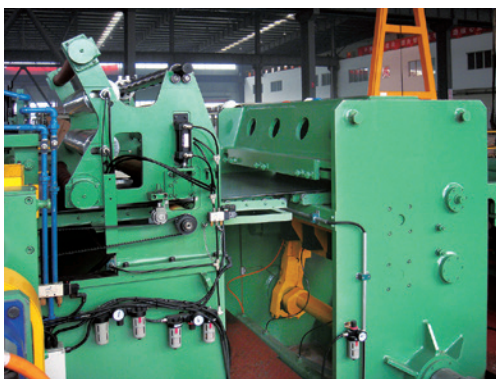


型号 Model	1250型	1600型	1800型	2000型
原始卷料 Processing material	冷轧板、镀锌板、彩涂板、不锈钢板等 Cold-rolled steel coil, Galvanized coil, Color-coated coil, Stainless steel coil, etc.			
材料厚度 Processing sheet thickness	0.3mm-2.3mm	0.5mm-3.0mm	0.5mm-3.0mm	0.5mm-3.0mm
材料宽度 Processing sheet width	1250mm (MAX)	1600mm (MAX)	1800mm (MAX)	2000mm (MAX)
卷料重量 Coil weight permitted	20ton (MAX)	20ton (MAX)	20ton (MAX)	20ton (MAX)
剪切精度 Cutting accuracy	±0.3mm	±0.5mm	±0.5mm	±0.5mm
机组速度 Line speed	60m/min			



开卷机 矫直机 剪板机 堆垛机

Decoiler Leveller Shear Stacker



- ▶▶ 高度可靠的机械性能
- ▶▶ 高品质的平整度
- ▶▶ 准确的定长
- ▶▶ 高质量的剪切
- ▶▶ 整齐的堆垛
- ▶▶ 友好的人机界面
- ▶▶ 保养的方便和简单

- ▶▶ Highly reliable machine performance
- ▶▶ High quality on flatness
- ▶▶ High precise cut to length control
- ▶▶ High quality on cutting
- ▶▶ Perfect stacking
- ▶▶ Delightful man-machine interface
- ▶▶ Easy and simpleness maintenance



小型（飞剪）横切线

CUT TO LENGTH LINE WITH ROTARY SHEAR



型号 Model	400型	800型	800型
原始卷料 Processing material	冷轧板、镀锌板、彩涂板、不锈钢板等 Cold-rolled steel coil, Galvanized coil, Color-coated coil, Stainless steel coil, etc.		
材料厚度 Processing sheet thickness	0.2mm-2.0mm	0.3mm-2.0mm	0.5mm-3.5mm
材料宽度 Processing sheet width	400mm (MAX)	800mm (MAX)	800mm (MAX)
卷料重量 Coil weight permitted	5ton (MAX)	10ton (MAX)	10ton (MAX)
剪切精度 Cutting accuracy	剪切Cutting $\pm 0.3\text{mm}$ 加减速Acc/ decelerate $\pm 0.4\text{mm}$		
剪切速度 Cutting speed	200cuts/min	160cuts/min	120cuts/min
机组速度 Line speed	70m/min-90m/min		



开卷机 矫直机 飞剪机 堆垛机

Decoiler Leveller Rotary shear Stacker

- ▶ 高度可靠的机器性能
- ▶ 高品质的平整度
- ▶ 准确的定长
- ▶ 高质量的剪切
- ▶ 高效率的生产节奏
- ▶ 友好的人机界面

- ▶ Highly reliable machine performance
- ▶ High quality on flatness
- ▶ High precise cut to length control
- ▶ High quality on cutting
- ▶ High efficiency for production
- ▶ Delightful man-machine interface



飞剪横切线

CUT TO LENGTH LINE WITH ROTARY SHEAR

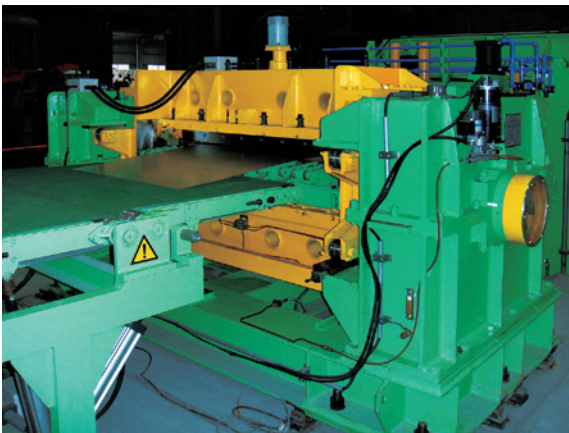


型号 Model	1250型	1600型	1800型
原始卷料 Processing material	冷轧板、镀锌板、彩涂板、不锈钢板等 Cold-rolled steel coil, Galvanized coil, Color-coated coil, Stainless steel coil, etc.		
材料厚度 Processing sheet thickness	0.3mm-2.3mm	0.5mm-3.0mm	0.5mm-3.0mm
材料宽度 Processing sheet width	1250mm (MAX)	1600mm (MAX)	1800mm (MAX)
卷料重量 Coil weight permitted	20ton (MAX)	20ton (MAX)	20ton (MAX)
剪切精度 Cutting accuracy	剪切Cutting $\pm 0.3\text{mm}$ 加减速Acc/ decelerate $\pm 0.4\text{mm}$		
剪切速度 Cutting speed	120cuts/min		
机组速度 Line speed	80m/min		



开卷机 矫直机 飞剪机 堆垛机

Decoiler Leveller Rotary shear Stacker



- ▶▶ 高度可靠的机器性能
- ▶▶ 高品质的平整度
- ▶▶ 准确的定长
- ▶▶ 高质量的剪切
- ▶▶ 高效率的生产节奏
- ▶▶ 友好的人机界面

- ▶▶ Highly reliable machine performance
- ▶▶ High quality on flatness
- ▶▶ High precise cut to length control
- ▶▶ High quality on cutting
- ▶▶ High efficiency for production
- ▶▶ Delightful man-machine interface



飞剪横切线

CUT TO LENGTH LINE WITH ROTARY SHEAR





开卷机 矫直机 飞剪机 堆垛机

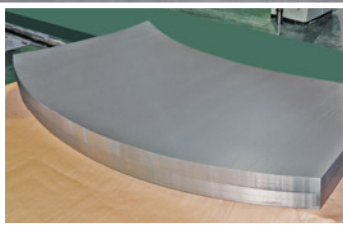
Decoiler Leveller Rotary shear Stacker

- ▶▶ 高度可靠的机器性能
 - ▶▶ 高品质的平整度
 - ▶▶ 准确的定长
 - ▶▶ 高质量的剪切
 - ▶▶ 高品质的板面质量
 - ▶▶ 高效率的生产节奏
 - ▶▶ 友好的人机界面
 - ▶▶ 可配置清洗机、涂油机等
- ▶▶ Highly reliable machine performance
 - ▶▶ High quality on flatness
 - ▶▶ High precise cut to length control
 - ▶▶ High quality on cutting
 - ▶▶ Surface with high quality
 - ▶▶ High efficiency for production
 - ▶▶ Delightful man-machine interface
 - ▶▶ Can equip with cleaning machine, oil machine, etc.



摆剪线

CUT TO LENGTH LINE WITH OSCILLATING SHAER



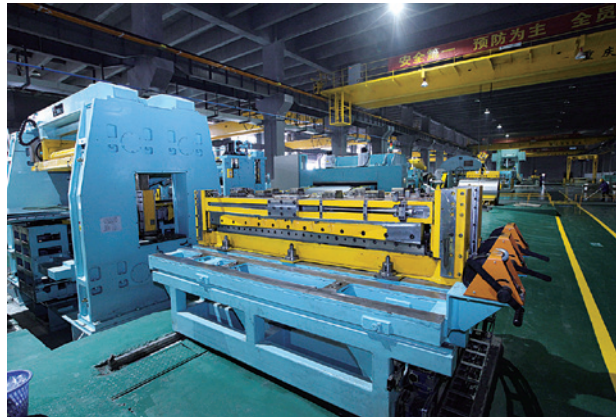
型号 Model	1650型	1850型
原始卷料 Processing material	冷轧板、镀锌板、彩涂板等 Cold-rolled steel coil, Galvanized coil, Color-coated coil, etc.	
材料厚度 Processing sheet thickness	0.5mm-2.5mm	0.5mm-2.5mm
材料宽度 Processing sheet width	1650mm (MAX)	1850mm (MAX)
卷料重量 Coil weight permitted	20ton (MAX)	20ton (MAX)
剪切精度 Cutting accuracy	±0.2mm	
角度精度 Angle accuracy	±3'	
机组速度 Line speed	80m/min	



开卷机 飞剪机 矫直机 堆垛机

Decoiler Rotary shear Leveller Stacker

- ▶▶ 高度可靠的机器性能
- ▶▶ 高品质的平整度
- ▶▶ 准确的定长
- ▶▶ 准确的摆动角度
- ▶▶ 高品质的板面质量
- ▶▶ 高效率的生产节奏
- ▶▶ 友好的人机界面
- ▶▶ Highly reliable machine performance
- ▶▶ High quality on flatness
- ▶▶ High precise cut to length control
- ▶▶ Exact oscillating angle
- ▶▶ Surface with high quality
- ▶▶ High efficiency for production
- ▶▶ Delightful man-machine interface



摆剪模

OSCILLATING SHEAR



型号 Model		
原始卷料	Processing material	冷轧板、镀锌板、彩涂板 Cold-rolled steel coil, Galvanized coil, Color-coated coil
材料厚度	Processing sheet thickness	0.5~3.0mm
材料宽度	Processing sheet width	1850、2050mm (客户指定宽度the customer specify the width)
剪切精度	Cutting accuracy	±0.5mm
剪切毛刺	Cutting burr	≤厚度thickness×3%
剪切直线度	Cutting straightness	≤0.1mm
摆动角度	Oscillating angle	±35°
摆动精度	Oscillating accuracy	±3'

停摆剪切线

CUT TO LENGTH LINE WITH START-STOP OSCILLATING SHEAR



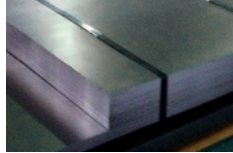
型号 Model		
原始卷料	Processing material	冷轧板、镀锌板、彩涂板 Cold-rolled steel coil, Galvanized coil, Color-coated coil
材料厚度	Processing sheet thickness	0.5~3.0mm
材料宽度	Processing sheet width	1850、2050mm (客户指定宽度the customer specify the width)
剪切精度	Cutting accuracy	±0.5mm
剪切毛刺	Cutting burr	≤厚度thickness×3%
剪切直线度	Cutting straightness	≤0.1mm
摆动角度	Oscillating angle	±35°
摆动精度	Oscillating accuracy	±3'
最大剪切次数	Max. cutting times	83次times/min
送料线速度	Feeding speed	200m/min
机组线速度	Line speed	90m/min

热轧横切线

CUT TO LENGTH LINE

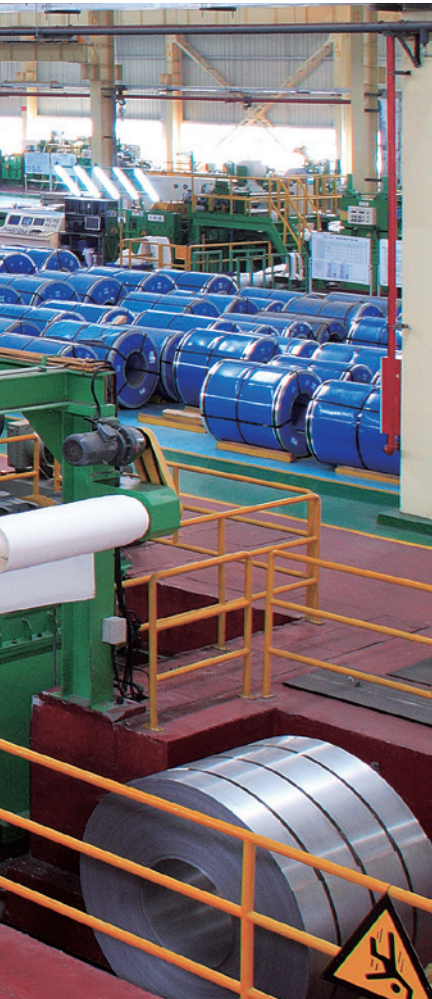


型号 Model	1600型	1800型	2000型	2200型
原始卷料 Processing material	热轧板、热轧酸洗板、不锈钢板等 Hot-rolled steel coil, Hot-acid-cleaning steel coil, Stainless steel coil, etc.			
材料厚度 Processing sheet thickness	1.2mm-6.0mm	3mm-12mm	5mm-20mm	8mm-25mm
材料宽度 Processing sheet width	1600mm (MAX)	1800mm (MAX)	2000mm (MAX)	2200mm (MAX)
卷料重量 Coil weight permitted	30ton (MAX)	30ton (MAX)	30ton (MAX)	30ton (MAX)
剪切精度 Cutting accuracy	±0.8mm	±1.5mm	±1.8mm	±2.0mm
机组速度 Line speed	60m/min (MAX)	40m/min (MAX)	25m/min (MAX)	25m/min (MAX)



开卷机 切边机 矫直机 剪板机 堆垛机

Decoiler Trimming shear Leveller Shear Stacker

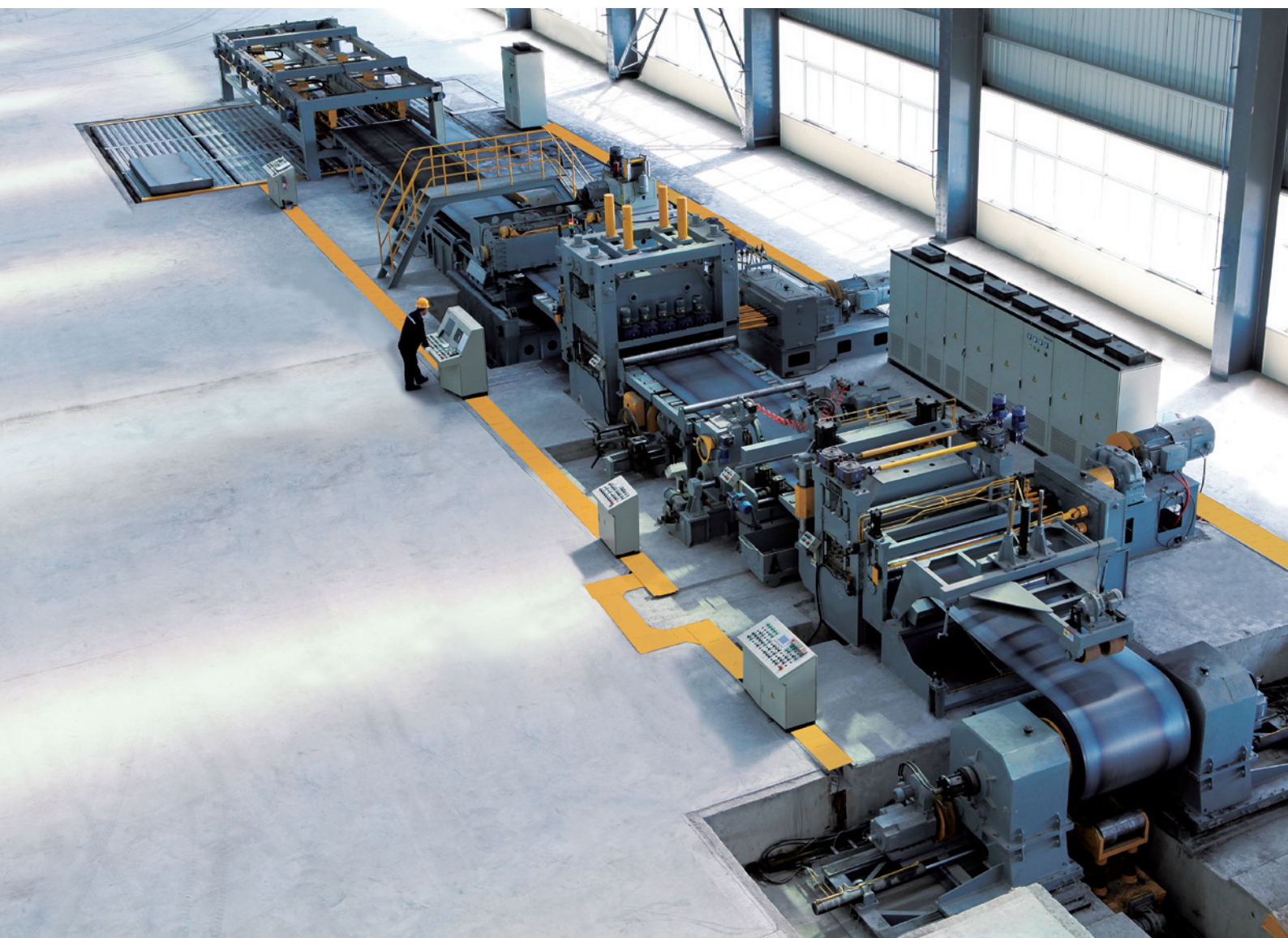


- ▶▶ 高度可靠的机器性能
- ▶▶ 准确的定长
- ▶▶ 完全的应力消除
- ▶▶ 精确的切边精度
- ▶▶ 整齐的堆垛
- ▶▶ 友好的人机界面

- ▶▶ Highly reliable machine performance
- ▶▶ High precise cut to length control
- ▶▶ Completely eliminate stress
- ▶▶ Accurate trimming
- ▶▶ Tidy stacking
- ▶▶ Delightful man-machine interface

热轧（移动）横切线

CUT TO LENGTH LINE WITH MOVING SHEAR



型号 Model	1600型	1800型	2000型	2200型
原始卷料 Processing material	热轧板、热轧酸洗板、不锈钢板等 Hot-rolled steel coil, Hot-acid-cleaning steel coil, Stainless steel coil, etc.			
材料厚度 Processing sheet thickness	1.2mm-6.0mm	3mm-12mm	5mm-20mm	8mm-25mm
材料宽度 Processing sheet width	1600mm (MAX)	1800mm (MAX)	2000mm (MAX)	2200mm (MAX)
卷料重量 Coil weight permitted	30ton (MAX)	30ton (MAX)	30ton (MAX)	30ton (MAX)
剪切精度 Cutting accuracy	±0.8mm	±1.0mm	±1.5mm	±1.5mm
机组速度 Line speed	50m/min (MAX)	40m/min (MAX)	25m/min (MAX)	25m/min (MAX)

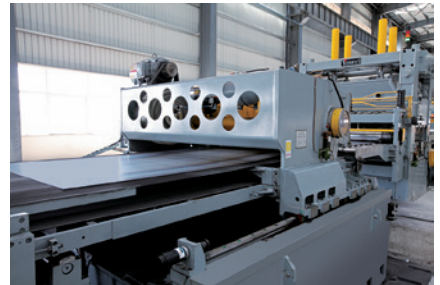


开卷机 切边机 矫直机 移动剪 堆垛机

Decoiler Trimming shear Leveller Moving shear Stacker



- ▶▶ 高度可靠的机器性能
 - ▶▶ 准确的定长
 - ▶▶ 完全的应力消除
 - ▶▶ 精确的切边精度
 - ▶▶ 高效的剪切效率
 - ▶▶ 整齐的堆垛
 - ▶▶ 友好的人机界面
- ▶▶ Highly reliable machine performance
 - ▶▶ High precise cut to length control
 - ▶▶ Completely eliminate stress
 - ▶▶ Accurate trimming
 - ▶▶ Effective shear efficiency
 - ▶▶ Tidy stacking
 - ▶▶ Delightful man-machine interface



复合线

COMBINED LINE



复合线具有精确定尺剪切以及分条卷取功能，可将各种卷材经开卷、校平、定尺剪切后自动堆垛，也可将卷材经分条纵剪后高速卷取。对于使用不同规格板材的企业，能做到校平定尺剪切与分条卷取的高效复合，极大地提高了设备的使用效率。

The combined line can do precision cut-to-length and slit-recoiling, and stack automatically the sheet metal after decoiling, leveling, cut-to-length, and recoil at high speed the strip after slitting coil. A high efficient combination of the cut-to-length and slit-recoil can be realized by such combined line, which enhance highly the rate of equipment utilization for enterprises which consume a big quantity of sheet metal with various specifications.



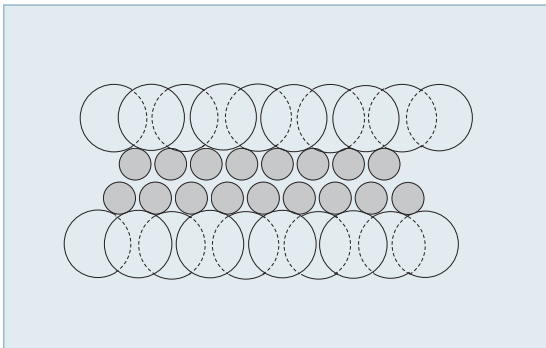
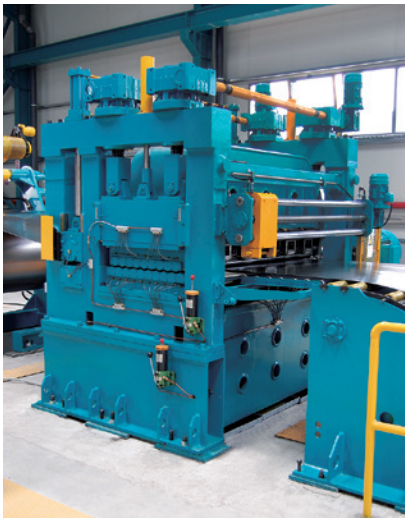
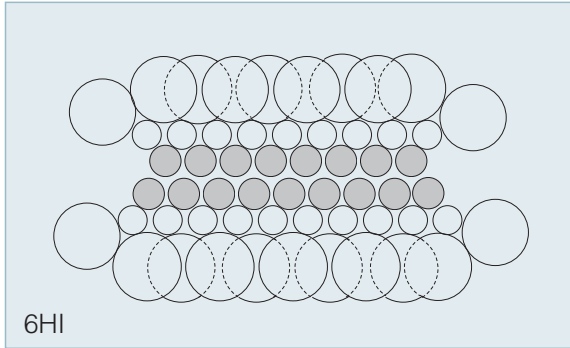
开卷机 矫直机 分条机 卷取机 剪板机 堆垛机

Decoiler Leveller Slitter Recoiler Shear Stacker



矫直机

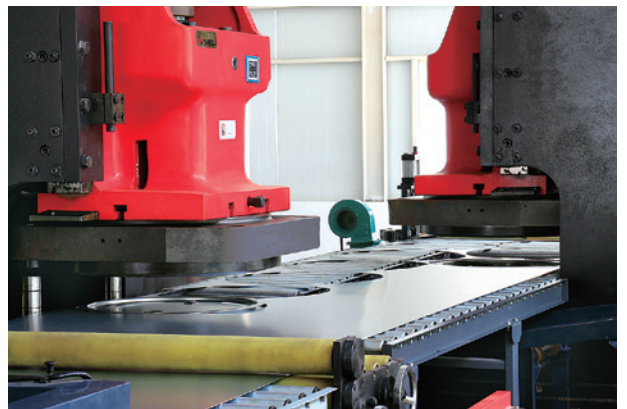
LEVELLER





落料线

SHEET METALS PRESSING LINE



落料线

SHEET METALS BLANKING LINE



型号 Model	1650型	1850型
原始卷料 Processing material	冷轧板、镀锌板、彩涂板等 Cold-rolled steel coil, Galvanized coil, Color-coated coil, etc.	
材料厚度 Processing sheet thickness	0.5mm-2.5mm	0.5mm-2.5mm
材料宽度 Processing sheet width	1650mm (MAX)	1850mm (MAX)
卷料重量 Coil weight permitted	20ton (MAX)	20ton (MAX)
送料精度 Feeding accuracy	±0.2mm	
送料速度 Feeding speed	200m/min (MAX)	
机组速度 Line speed	80m/min	



开卷机 矫直机 压力机 磁性堆垛机

Decoiler Leveller Punch Magnetic stacker

- ▶▶ 高度可靠的机器性能
- ▶▶ 准确的定长
- ▶▶ 高速高精度喂料
- ▶▶ 有效的防划伤措施
- ▶▶ 整齐的堆垛
- ▶▶ 高效的材料利用率
- ▶▶ 友好的人机界面

- ▶▶ Highly reliable machine performance
- ▶▶ High precise cut to length control
- ▶▶ High speed and high precision feeding
- ▶▶ Effective scratch-proof measure
- ▶▶ Tidy stacking
- ▶▶ Efficient material utilization
- ▶▶ Delightful man-machine interface

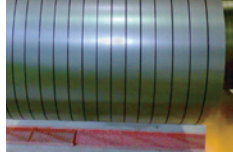


纵切线

SLITTING LINE



型号 Model	1250型	1600型	1800型	2000型
原始卷料 Processing material	冷轧板、镀锌板、彩涂板、不锈钢板等 Cold-rolled steel coil, Galvanized coil, Color-coated coil, Stainless steel coil, etc.			
材料厚度 Processing sheet thickness	0.2mm-2.0mm	0.3mm-3.0mm	0.5mm-3.0mm	0.5mm-3.0mm
材料宽度 Processing sheet width	1250mm (MAX)	1600mm (MAX)	1800mm (MAX)	2000mm (MAX)
卷料重量 Coil weight permitted	20ton (MAX)	20ton (MAX)	20ton (MAX)	20ton (MAX)
宽度精度 Width accuracy	±0.05mm	±0.1mm	±0.1mm	±0.15mm
机组速度 Line speed	200m/min (MAX)	200m/min (MAX)	150m/min (MAX)	150m/min (MAX)



开卷机 分条机 卷取机

Decoiler Slitter Recoiler

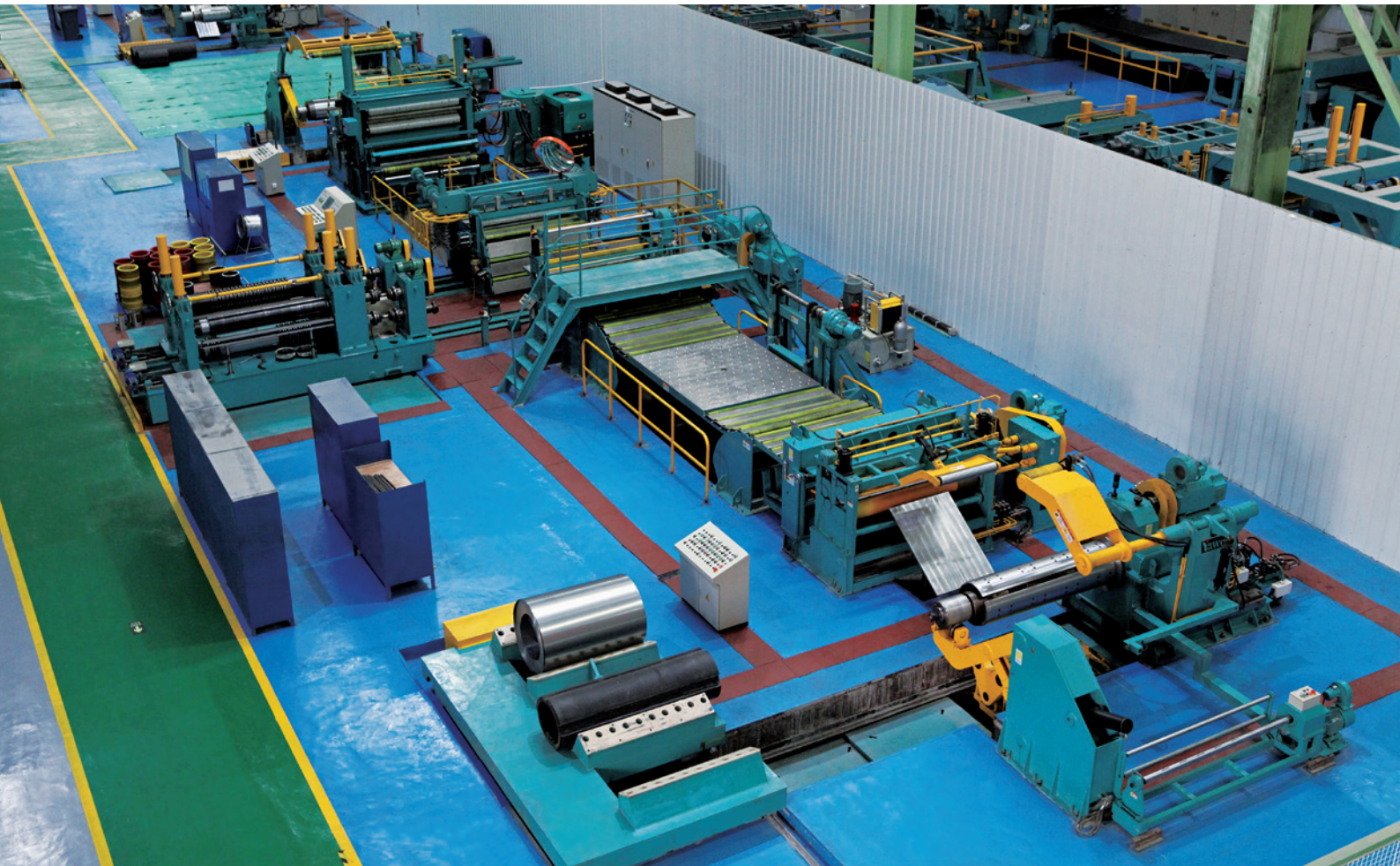
- ▶▶ 高度可靠的机器性能
- ▶▶ 精确的分条剪切
- ▶▶ 整齐的卷取
- ▶▶ 无划伤的张力控制
- ▶▶ 友好的人机界面

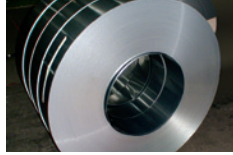
- ▶▶ Highly reliable machine performance
- ▶▶ Accurate slitting and cutting
- ▶▶ Tidy recoiling
- ▶▶ Tension control without scratch
- ▶▶ Delightful man-machine interface



纵切线

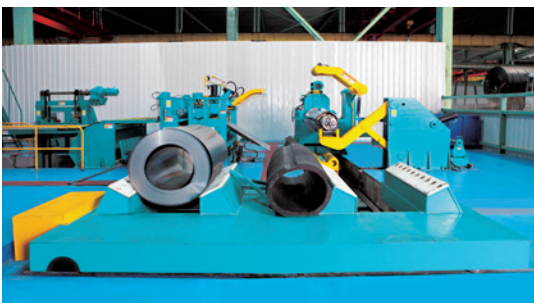
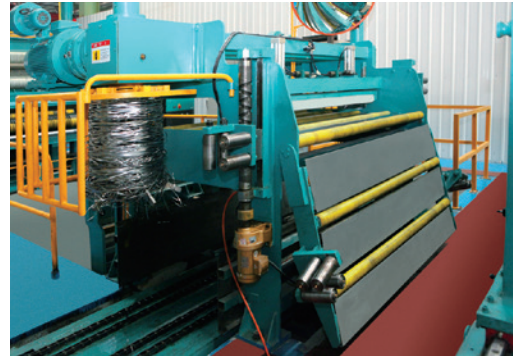
SLITTING LINE





开卷机 分条机 卷取机

Decoiler Slitter Recoiler

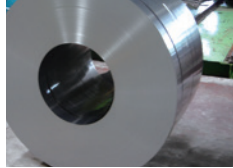


热轧纵切线

SLITTING LINE



型号 Model	1600型	1800型	2000型	2200型
原始卷料 Processing material	热轧酸洗板、热轧板等 Hot-rolled pickled coil, Hot-rolled coil, etc.			
材料厚度 Processing sheet thickness	0.8mm-6.0mm	0.8mm-6.0mm	2.0mm-12.0mm	3.0mm-16.0mm
材料宽度 Processing sheet width	1600mm (MAX)	1800mm (MAX)	2000mm (MAX)	2200mm (MAX)
卷料重量 Coil weight permitted	30ton (MAX)	30ton (MAX)	30ton (MAX)	30ton (MAX)
宽度精度 Width accuracy	±0.15mm	±0.15mm	±0.2mm	±0.3mm
机组速度 Line speed	120m/min (MAX)	120m/min (MAX)	80m/min (MAX)	60m/min (MAX)

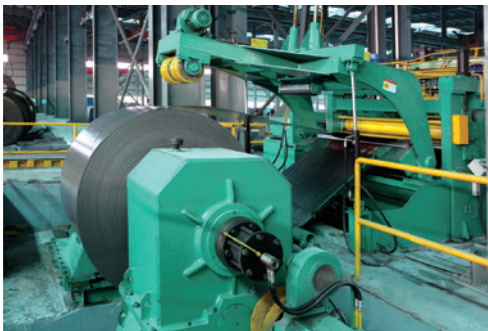
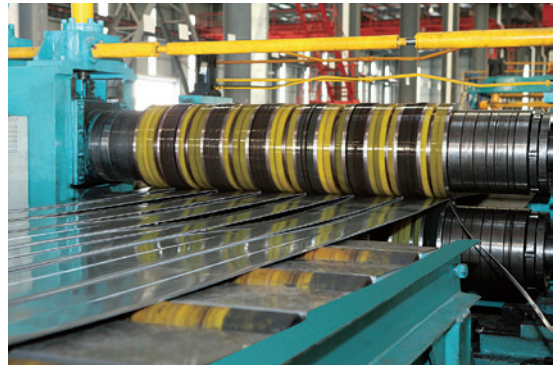


开卷机 分条机 卷取机

Decoiler Slitter Recoiler

- ▶▶ 高度可靠的机器性能
- ▶▶ 精确的分条剪切
- ▶▶ 整齐的卷取
- ▶▶ 友好的人机界面

- ▶▶ Highly reliable machine performance
- ▶▶ Accurate slitting and cutting
- ▶▶ Tidy recoiling
- ▶▶ Delightful man-machine interface



分条线机器人排刀

ROBOT SETUP FOR SLITTING LINE



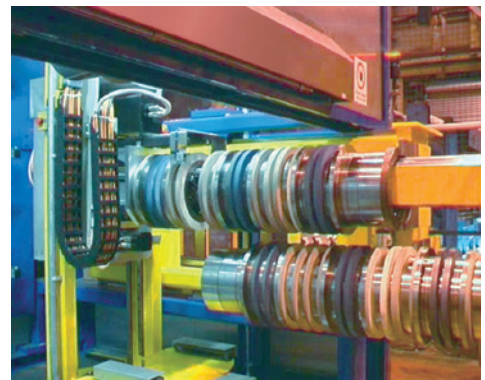
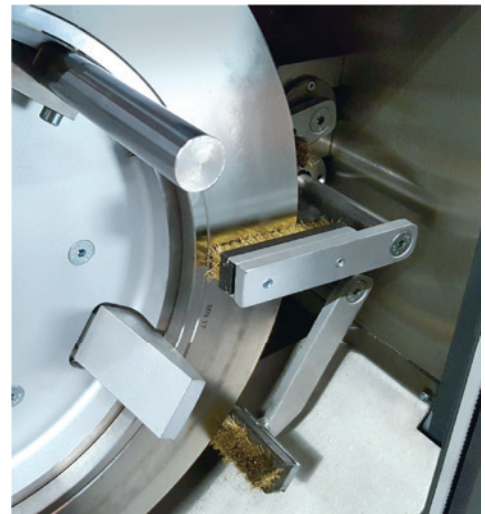
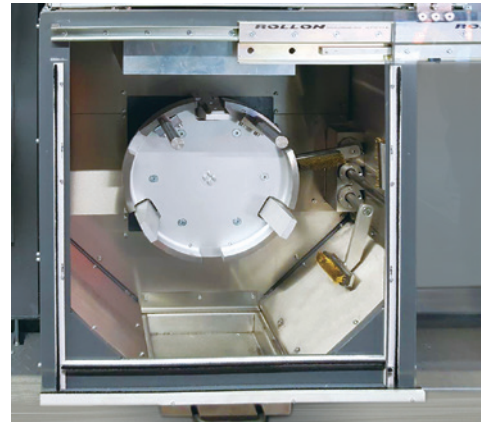
型号 Model	PRCS20
刀库: 长×宽×高 Tool store: length×width×height	L×2750×3550 (L根据加工工艺决定) L depends on the machining process
机器人X轴行走速度 Robot portal traveling speed in X-axis	2m/s
机器人Y轴提升速度 Robot portal lifting speed in Y-axis	1m/s
机器人Z轴旋转速度 Robot portal rotational speed in Z-axis	270°/s
机器人抓取重量 Robot portal grab weight	≤500Kg
机器人重复定位精度 Robot portal repeated positioning accuracy	±0.05mm
抓取最薄隔套 Grab the thinnest spacer	≥3mm

开卷机 分条机 卷取机



Decoiler Slitter Recoiler

- ▶ 高度可靠的机械性能
 - ▶ 刀片、隔套的全智能管理
 - ▶ 安全地垫、加密光栅保证操作的安全性
 - ▶ 极高的排刀效率
 - ▶ 良好的机器扩展性能
 - ▶ 友好的人机界面
-
- ▶ Highly reliable mechanical performance
 - ▶ Full intelligent management for knife and spacer
 - ▶ Safety mat, encryption grating to guarantee the safety operation
 - ▶ High efficiency setups
 - ▶ Good extension the machine performance
 - ▶ Friendly HMI



江苏亚威机床股份有限公司

JIANGSU YAWEI MACHINE TOOL CO., LTD.

江苏扬州市江都区黄海南路仙城工业园

销售电话: 0514-86896918

售后服务: 0514-86896938

传 真: 0514-86896903

Xiancheng Industrial Zone, Huanghai South Road,
Jiangdu, Jiangsu, China

Sales hot line:+86 514 86896918

Service phone:+86 514 86896938

Fax:+86 514 86896903

E-mail:sales3@yawei.cc

<http://www.yawei.cc>

P.C.:225200



Yawei 亚威

以上两个标志皆为江苏亚威机床股份有限公司的商标

2017年1月版 南京泰迪广告公司 设计 / 承制 025-84713640